

1/2" COLD ROLLED
STEEL CHANNEL

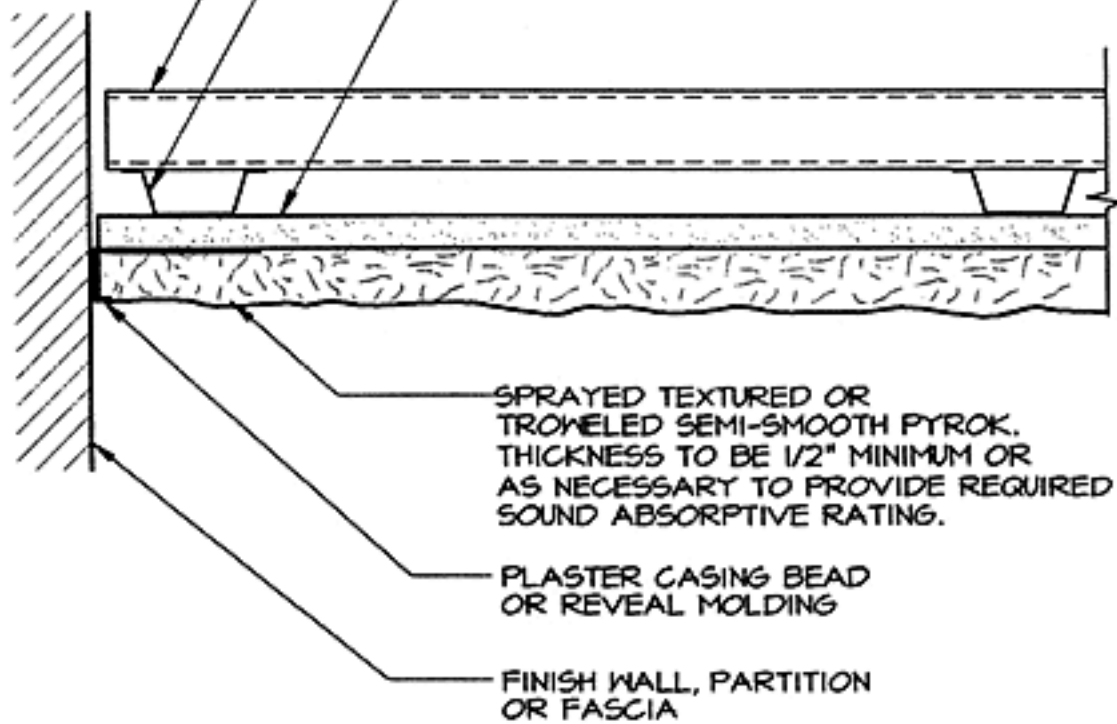
7/8" METAL FURRING
CHANNEL @ 16" O.C.

5/8" TYPE X GYPSUM
WALL BOARD WITH
LEVEL 4 FINISH

SPRAYED TEXTURED OR
TROWELED SEMI-SMOOTH PYROK.
THICKNESS TO BE 1/2" MINIMUM OR
AS NECESSARY TO PROVIDE REQUIRED
SOUND ABSORPTIVE RATING.

PLASTER CASING BEAD
OR REVEAL MOLDING

FINISH WALL, PARTITION
OR FASCIA



1/2" COLD ROLLED
STEEL CHANNEL

7/8" METAL FURRING
CHANNEL @ 16" O.C.

5/8" TYPE X GYPSUM
WALL BOARD WITH
LEVEL 4 FINISH

NOTES:

1. CORNER DETAILS ARE SIMILAR FOR
WALLS AND VERTICAL SURFACES
2. DETAILS SIMILAR FOR EXPANDED METAL
LATH SUBSTRATE

SPRAYED TEXTURED OR
TROWELED SEMI-SMOOTH PYROK,
THICKNESS TO BE 1/2" MINIMUM OR
AS NECESSARY TO PROVIDE REQUIRED
SOUND ABSORPTIVE RATING.

INSIDE CORNER
NO MOLDING REQUIRED

OUTSIDE CORNER
IV PRE-FABRICATED MOLDING

