



BXUV.J301 Fire Resistance Ratings - ANSI/UL 263

[Page Bottom](#)

Design/System/Construction/Assembly Usage Disclaimer

- Authorities Having Jurisdiction should be consulted in all cases as to the particular requirements covering the installation and use of UL Listed or Classified products, equipment, system, devices, and materials.
 - Authorities Having Jurisdiction should be consulted before construction.
 - Fire resistance assemblies and products are developed by the design submitter and have been investigated by UL for compliance with applicable requirements. The published information cannot always address every construction nuance encountered in the field.
 - When field issues arise, it is recommended the first contact for assistance be the technical service staff provided by the product manufacturer noted for the design. Users of fire resistance assemblies are advised to consult the general Guide Information for each product category and each group of assemblies. The Guide Information includes specifics concerning alternate materials and alternate methods of construction.
 - Only products which bear UL's Mark are considered as Classified, Listed, or Recognized.
-

Fire Resistance Ratings - ANSI/UL 263

[See General Information for Fire Resistance Ratings - ANSI/UL 263](#)

Design No. J301

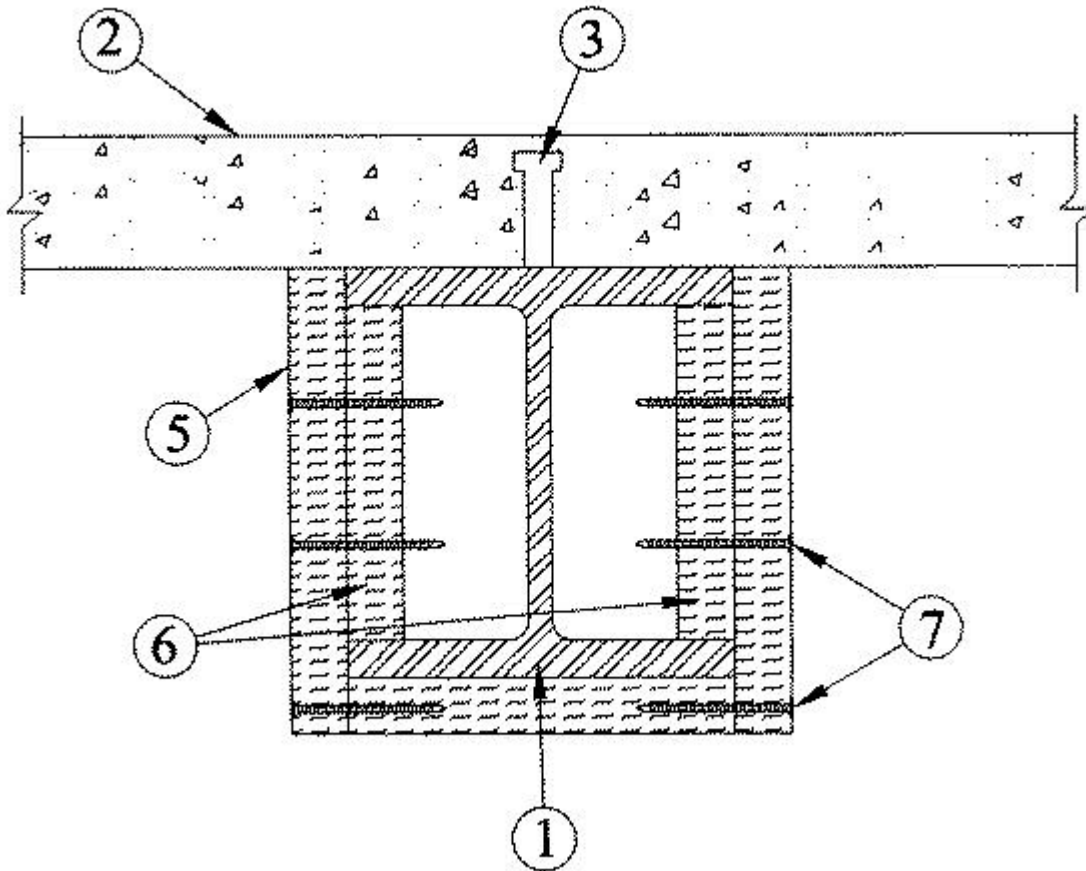
August 12, 2002

Restrained Assembly Ratings - 1, 1-1/2, 2 or 3 HR (See Items 2, 5)

Unrestrained Assembly Ratings - 1, 1-1/2 or 2 HR (See Items 2, 5)

Unrestrained Beam Ratings - 1, 1-1/2 or 2 (See Item 5)

Load Restricted for Canadian Applications — See Guide [BXUV7](#)



1. **Beam** — W8x28 min size.

2. **Normal Weight or Lightweight Concrete** — Normal weight concrete carbonate or siliceous aggregate, 145 plus or minus 3 pcf unit weight, 3500 psi compressive strength, vibrated. Lightweight concrete, expanded shale or slate aggregate by rotary-kiln method or expanded clay aggregate by rotary-kiln or sintered-grate method: 3000 psi compressive strength, vibrated, 4 to 7 percent entrained air, unit weight 105 pcf plus or minus 3.

Restrained Assembly Rating Hr	Unrestrained Assembly Rating Hr	Min Thkns of Normal Weight Concrete (in.)	Min Thkns of Light Weight Concrete (in.)
1	1	5-1/4	5
1-1/2 or 2	1, 1-1/2	5-1/4	5
2	2	5-1/4	5
3	2	6-1/4	5

For the unprotected slab the min concrete cover below the reinforcements shall vary according to the Restrained and Unrestrained Assembly Rating:

Restrained Assembly Rating Hr	Unrestrained Assembly Rating Hr	Min Thkns of Concrete Cover NW or LW (In.)
1	1	1
1-1/2 or 2	1 or 1-1/2	1
2 or 3	2	1

- 3. **Shear Connector (Optional)** — Studs 3/4 in. diam, headed type or equivalent per AISC specifications. Welded to top flange of beam.
- 4. **Reinforcing Steel (Not Shown)** — Min No. 3 (3/8 in. diam) deformed bars, either grade 40 or 60. Min areas of reinforcing steel must be provided in accordance with the latest (ACI) Specifications.
- 5. **Mineral and Fiber Boards** — Boards cut in various widths to be compatible with the size of beam being protected. Boards placed parallel with the flange of the beams being protected. Boards placed parallel with the flange of the beams are cut the width of the flange. Boards placed parallel with the web of the beams are cut the width of the beams (web side) plus twice the boards thickness. The voids created by the flutes above the beam to be filled with mineral wool batts having a nom density of 4 lb/cu ft.

Restrained Assembly Rating Hr	Unrestrained Assembly Rating Hr	Unrestrained Beam Rating Hr	Min Mineral & Fiber Board Thkns In.
1	1	1	3/4
1-1/2	1	1	3/4
1-1/2	1-1/2	1-1/2	3/4
2	1	1	3/4
3	2	2	1-5/8

ALBI MFG, DIV OF STANCHEM INC — Type Dri-Clad.

- 6. **Noggings** — Min 1-1/2 in. thick, pieces of mineral and fiber board (See Item 5). Cut to friction fit between beam flanges.
- 7. **Fasteners** — The boards are fastened to the noggings and to each other by means of spiral type screws, spaced a max of 6 in. OC. The fasteners are installed on both sides of horizontal joints.

*Bearing the UL Classification Mark

Last Updated on 2002-08-12

[Questions?](#)

[Notice of Disclaimer](#)

[Page Top](#)

Copyright © 2008 Underwriters Laboratories Inc.®

The appearance of a company's name or product in this database does not in itself assure that products so identified have been manufactured under UL's Follow-Up Service. Only those products bearing the UL Mark should be considered to be Listed and covered under UL's Follow-Up Service. Always look for the Mark on the product.

UL permits the reproduction of the material contained in the Online Certification Directory subject to the following conditions: 1. The Guide Information, Designs and/or Listings (files) must be presented in their entirety and in a non-misleading manner, without any manipulation of the data (or drawings). 2. The statement "Reprinted from the Online Certifications Directory with permission from Underwriters Laboratories Inc." must appear adjacent to the extracted material. In addition, the reprinted material must include a copyright notice in the following format: "Copyright © 2008 Underwriters Laboratories Inc.®"

An independent organization working for a safer world with integrity, precision and knowledge.

